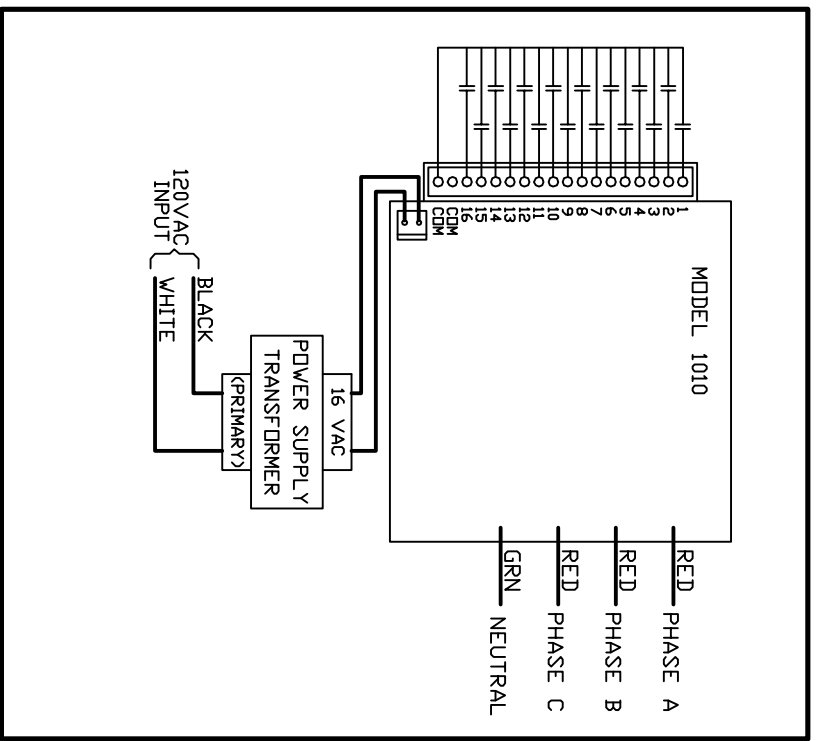


REVISIONS

LTR	DESCRIPTION	DATE	APPROVED
A	AS ISSUED	5/10/99	WHB
B	REVISION	12/5/99	WHB
C	REVISION	9/20/07	WHB

NOTES:

1. CONNECT POWER SUPPLY TRANSFORMER PRIMARY TO 120VAC.
2. FOR SINGLE PHASE OPERATION, CONNECT PHASE A RED WIRE TO "HOT" PHASE. CONNECT GREEN WIRE TO GROUND.
3. FOR TWO-PHASE OPERATION, CONNECT PHASE A RED WIRE TO ONE "HOT" PHASE AND PHASE B RED WIRE TO THE OTHER. CONNECT GREEN WIRE TO GROUND.
4. FOR THREE-PHASE OPERATION, CONNECT PHASE A RED WIRE TO ONE "HOT" PHASE, PHASE B RED WIRE TO THE SECOND PHASE, AND PHASE C TO THE THIRD PHASE. CONNECT GREEN WIRE TO GROUND. 300VAC MAXIMUM PER PHASE.



ALL WIRES #18AWG

TOLERANCES UNLESS OTHERWISE SPECIFIED

APPROVALS DATE

DRAWN W/HB 5/9/99

CHECKED

BRAYDEN AUTOMATION CORPORATION
 6230 AVIATION CIRCLE, LOVELAND, CO 80538

TITLE: WIRELYNX MODEL LX1010
 POWERLINE CARRIER TRANSMITTER

SCALE: DRAWING NUMBER:
 A-01010-97006-1

DO NOT SCALE DRAWING SHEET: 1 OF 1